

ENTRE

ARAWA



ARTU JAVE

LA-6

LA-5

LA-4

LA-3

TG16

TG29

TG20

TG27

TG28

TG35

Andritic rhyolite

Qapu

Andritic obsidian

Qapu

Particulate porphyry

Qapu

Al

Qapu

Qapu

Qapu

Qapu

Qapu

Qapu

Qapu

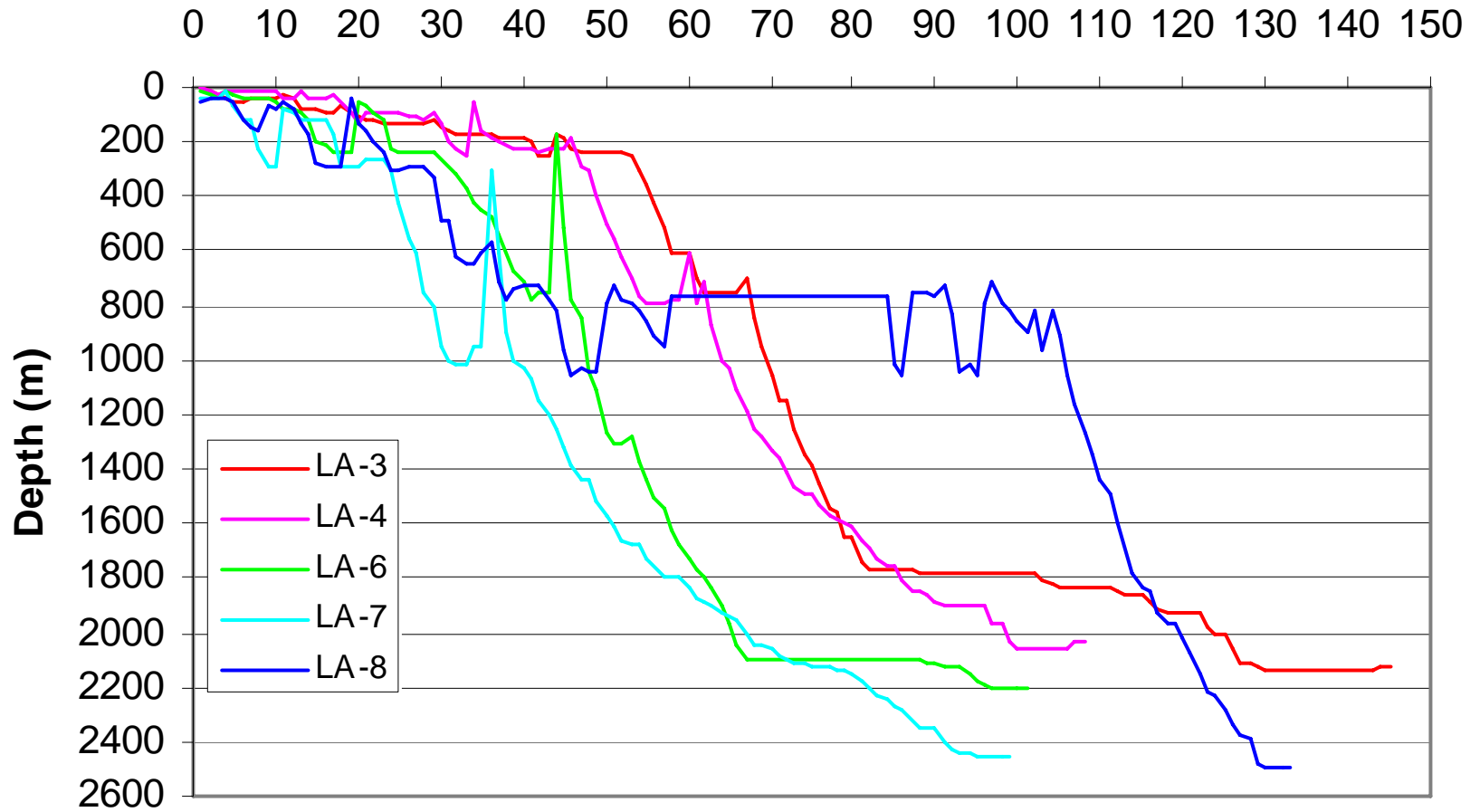
#280

A32

A32

Aluto Langanu Drilling Curves

Days



WELL COMPLETION DIAGRAM LA-3

DATUM: Top Of Cellar
LOCATION: E:77401N:60723
ELEVATION: 1921.2 m
DRILLED: Jan. 21, 1983 - June 13, 1983

20" cemented with 18.8 cubic meters A class cement, returns to surface

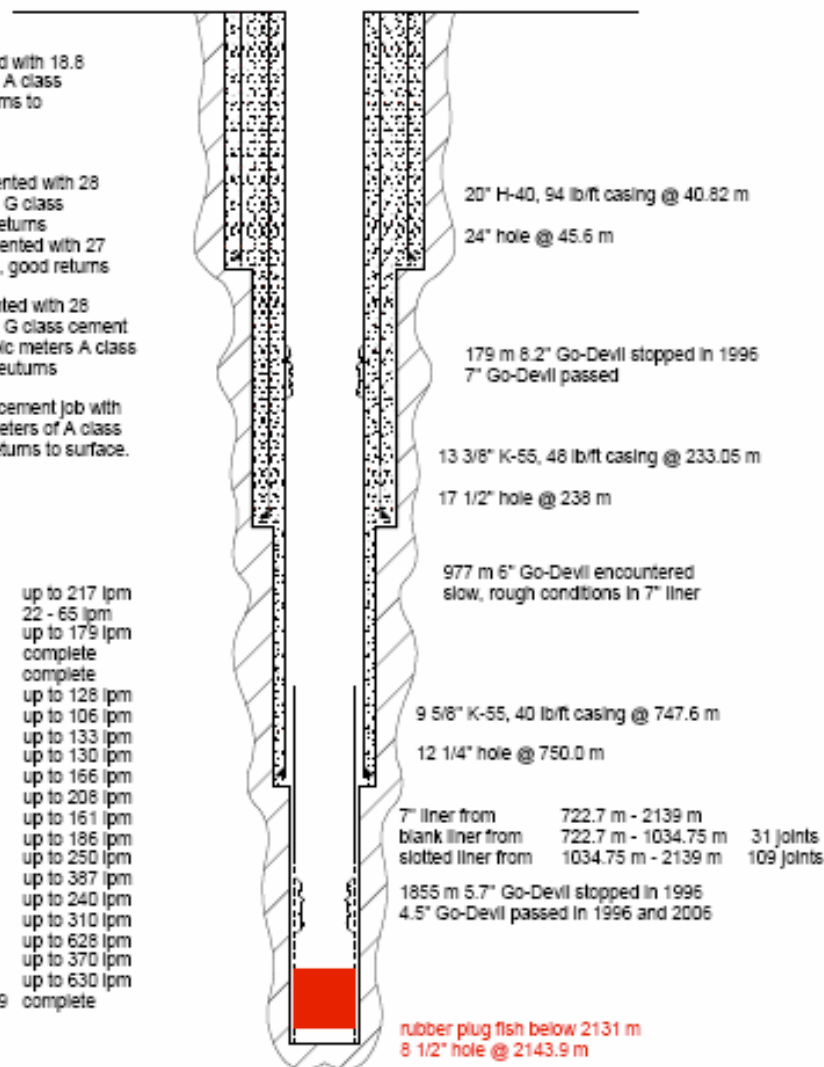
13 3/8" cemented with 28 cubic meters G class cement, no returns annulus cemented with 27 cubic meters, good returns

9 5/8" cemented with 28 cubic meters G class cement and 18.6 cubic meters A class cement, no returns

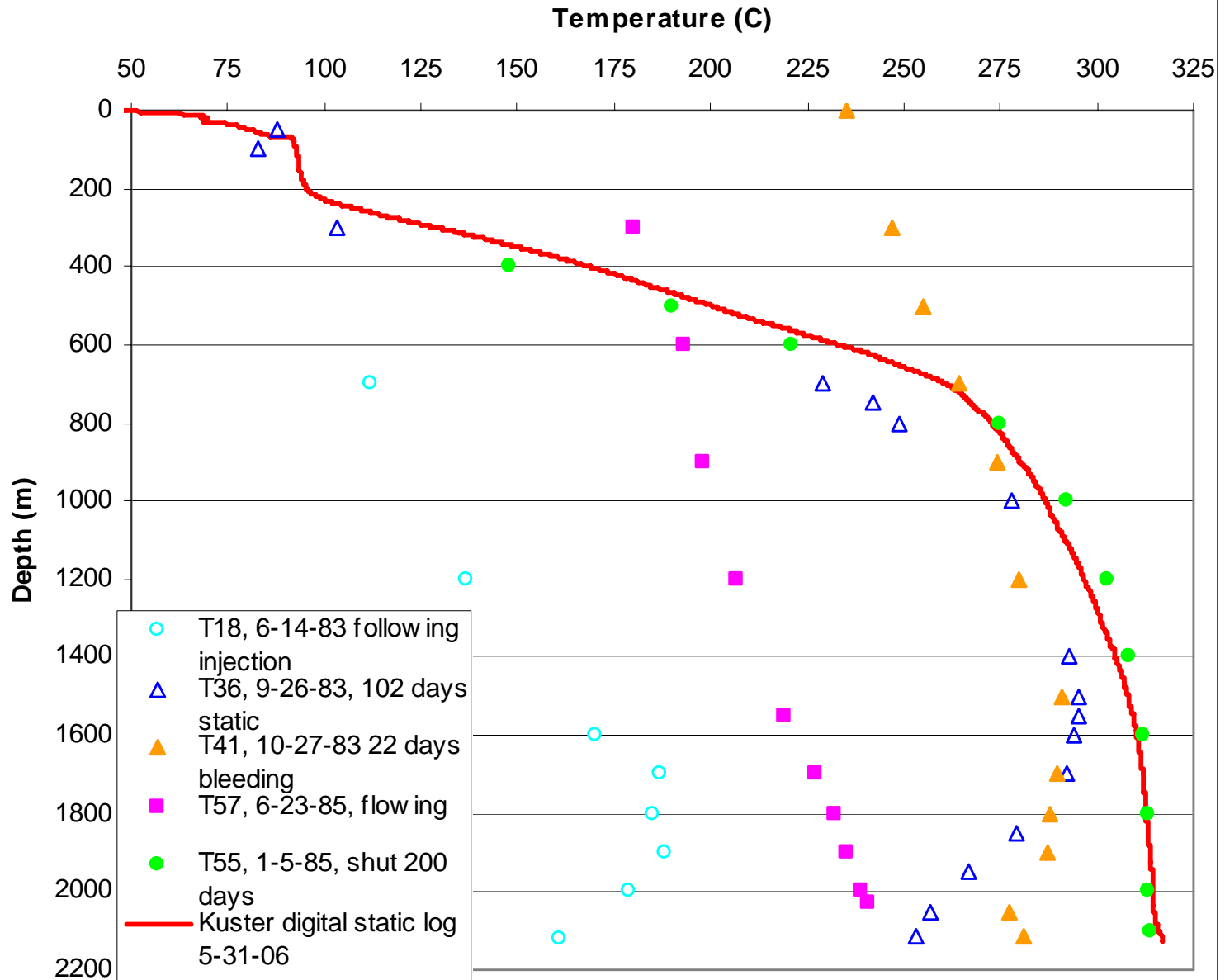
one annular cement job with 31.5 cubic meters of A class cement lth returns to surface.

Fluid losses

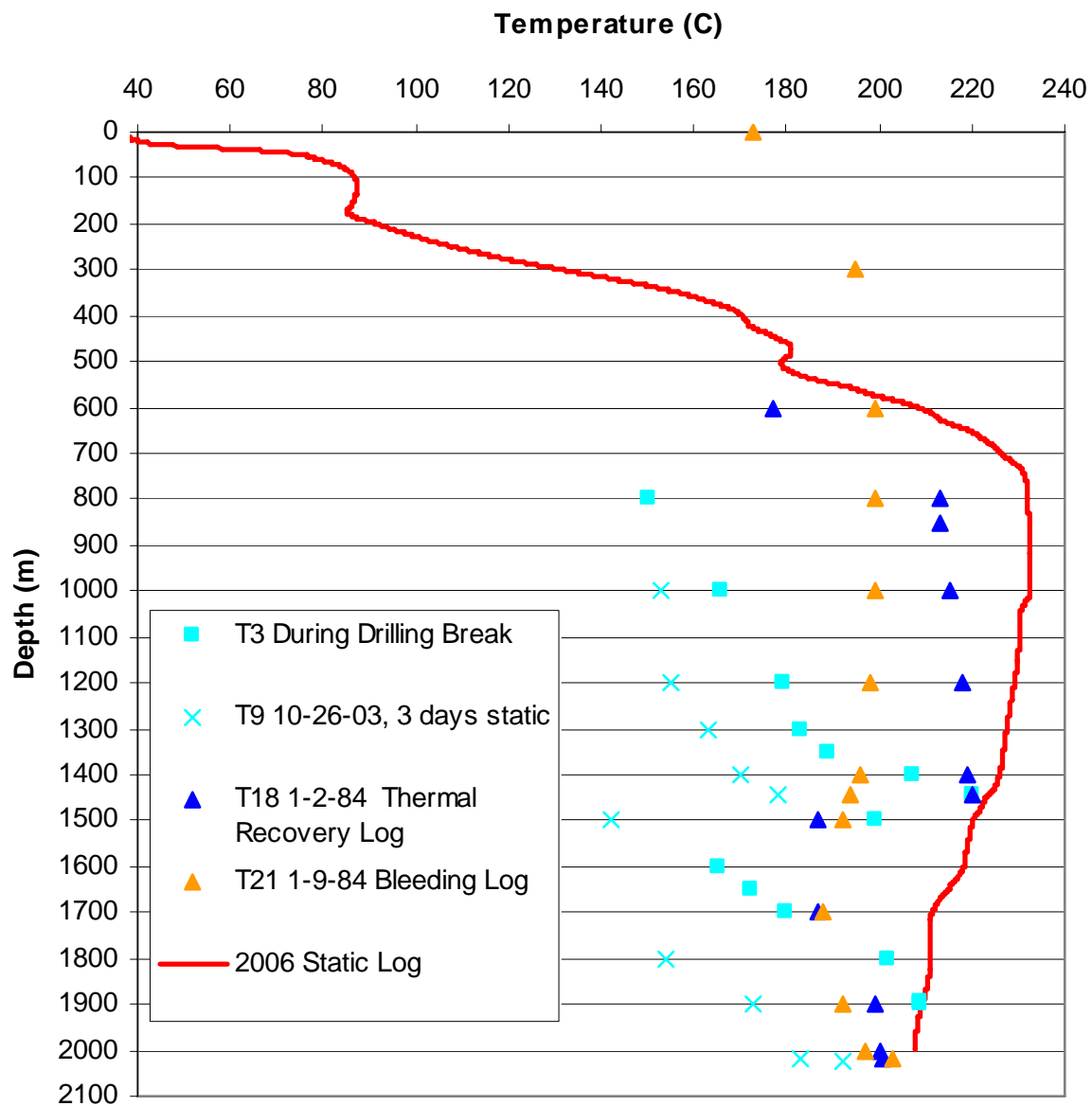
29 - 43	up to 217 lpm
43 - 47	22 - 65 lpm
50 - 84.1	up to 179 lpm
84.1 - 137.1	complete
145 - 250	complete
1145 - 1150	up to 128 lpm
1395 - 1433	up to 106 lpm
1522 - 1530	up to 133 lpm
1657 - 1776	up to 130 lpm
1784 - 1806	up to 166 lpm
1806 - 1818	up to 208 lpm
1833 - 1849	up to 161 lpm
1849 - 1859	up to 186 lpm
1859 - 1886	up to 250 lpm
1886 - 1919	up to 387 lpm
1922 - 1929	up to 240 lpm
1929 - 1990	up to 310 lpm
1990 - 2000	up to 628 lpm
2000 - 2055	up to 370 lpm
2055 - 2117	up to 630 lpm
2117 - 2143.9	complete



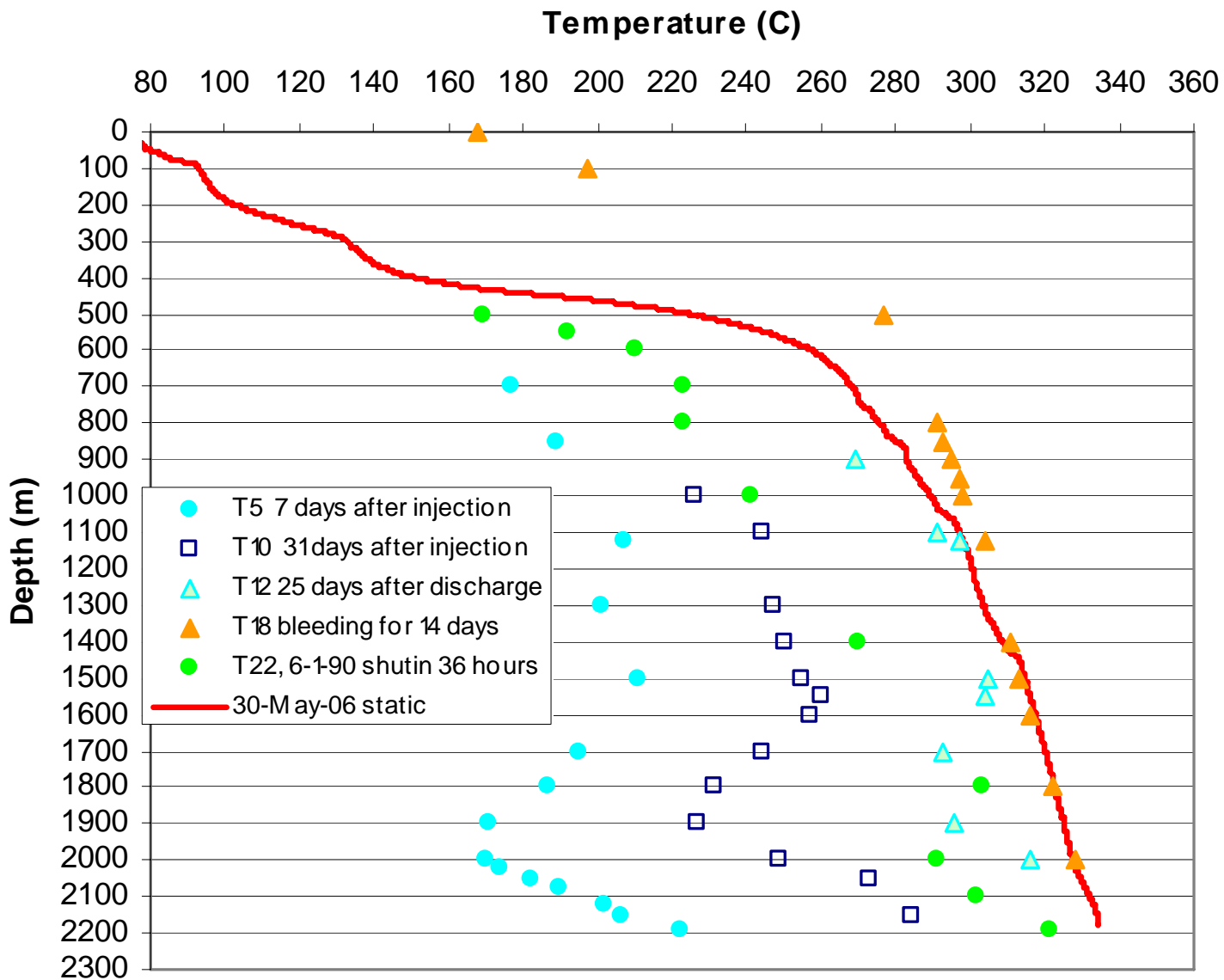
LA-3 Selected Temperature Logs



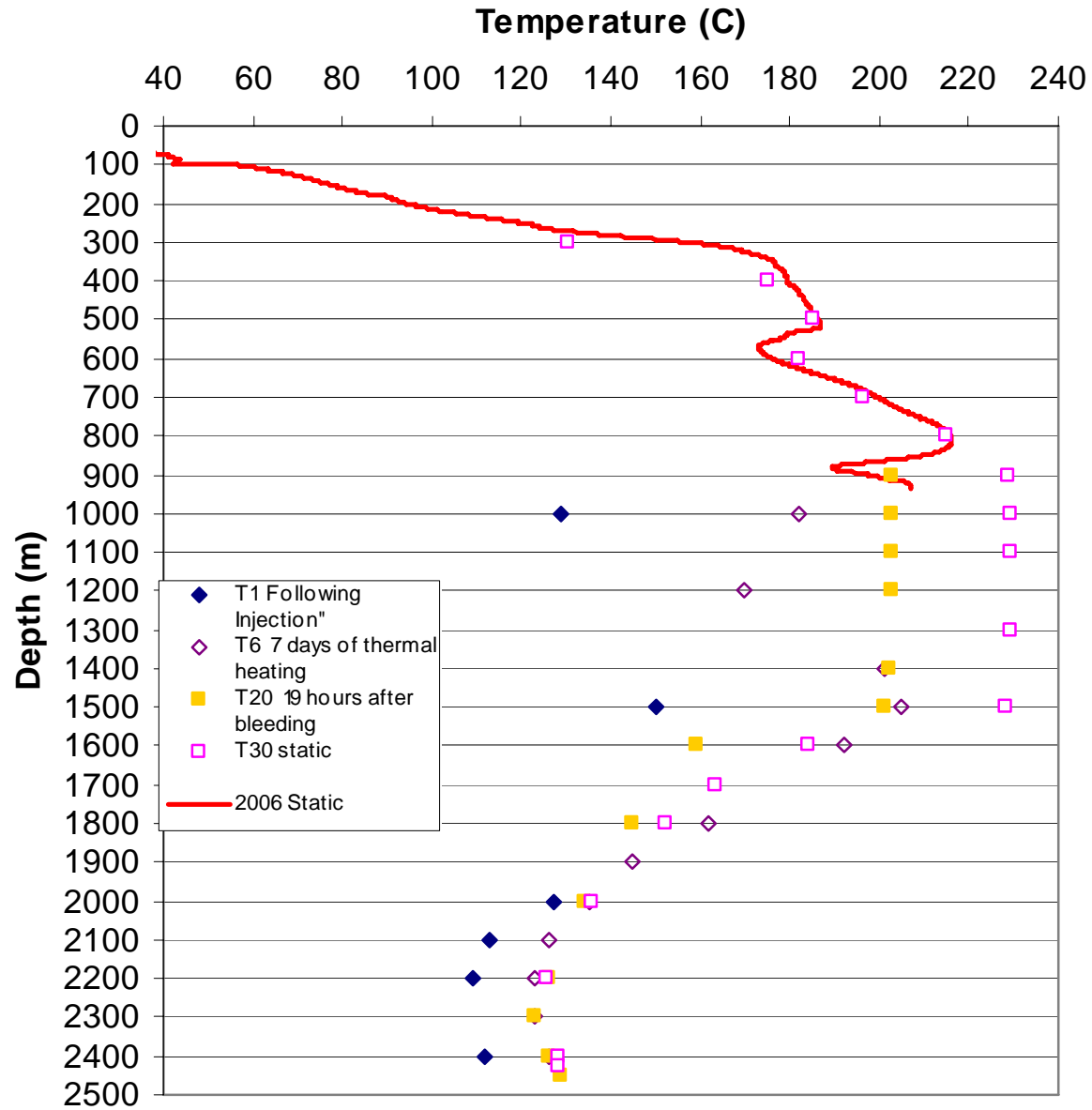
LA-4 Selected Temperature Profiles



LA-6 Selected Temperature Logs



LA-7 Selected Temperature Logs



LA-8 Selected Temperature Logs

